

RAT OR WĒTĀ DROPPINGS?

You may be able to spot signs of predators even without setting up tracking devices and one of the key indicators is droppings!

Rat droppings are very similar looking to the droppings of our treasured invertebrates, the wētā. Incidentally, the te reo Māori word for poo is weta (without the tohutō / macrons). You can use the guides below to help tell them apart!

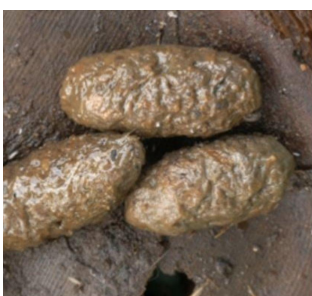
Wētā droppings are:

- Round like a jelly bean with a blunter end (roughly 10mm in length)
- Ridged lengthwise resulting in a striped appearance that fades with time
- Slightly flattened at the edges
- Have been known to smell like vanilla
- Often found near to an entrance or exit of a hole/burrow e.g. in a tree



Norway rat droppings

- Cylindrical pellets roughly 13.4-19.1mm long
- Droppings taper at the end but are larger and have rounder tips compared to the Ship rat droppings



Ship rat droppings

- Small cylindrical pellets roughly 6.8 - 13.8mm long
- Pellets are thinner and taper to a sharper point compared to Norway rat droppings

